

Riverside Meadows Elementary School



School Accountability Report Card

Data From the 2006-2007 School Year • Published During 2007-2008

Grades K-8
1751 Cimarron Drive Plumas Lake, CA 95961
Phone: (530) 743-1271 Fax: (530) 743-8970
Web site: www.plusd.org/schools/riversidemeadowsis

Dione Beilby
Superintendent
Kirsten Spallino
Principal

Principal's Message

Dear Families,



Welcome to the Plumas Lake Elementary School District. In our District we strive to provide a unique and wonderful educational experience for children, from the safety of the campus, to the warmth of the learning environment, to the rigor and breadth of the instructional programs. All aspects of the school contribute to providing children with the skills they need to be successful learners. It remains our single most important goal to ensure that your child enjoys academic success throughout his or her educational experience at either of our campuses.

Our District's mission is to provide a learning community that challenges ALL students to realize their greatest potential. Where the District is committed to ensuring a student-focused, safe, and challenging environment; where students understand and assume responsibility for lifelong learning; work to achieve their personal best; and become productive citizens in a diverse, global society.

We encourage an environment where students are physically, socially, emotionally, intellectually, and psychologically supported; an environment that is free of drugs; and an environment that is safe and conducive to learning. Our long list of NCLB-supported activities and programs includes Red Ribbon Week, clubs, events, athletics, specialized PE, and School Spirit Committee.

Parental Involvement

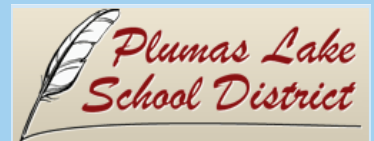
Parent support and involvement continue to be important aspects of the success of the Plumas Elementary School District. This support is given, recognized, and appreciated in many different ways. Parents can assist in the planning of the programs and policies, while others serve as classroom and library volunteers, plan family activities, or work as art docents. Parents also support student success by providing space, time, and encouragement for daily homework, and by sending a clear message that education and regular school attendance are important to the family. Parent volunteers are coordinated by our school principal; for more information on how to become involved, contact Kirsten Spallino, Principal, at (530) 743-1271.

The safety of our students is this school's first priority and the discipline policy is strictly enforced. We emphasize cooperation and responsible, respectful behavior. All adults visiting campus are required to check in through the school office. The atmosphere of the school makes our students feel comfortable and secure.

Professional Development

Our teachers receive ongoing training in the implementation of our adopted state standards-based curriculum. Each year, our teachers complete hundreds of hours of professional learning. This includes professional learning in differentiated instruction, which allows all students to access the adopted curriculum and progress towards the state standards. Helping teachers learn how to support English Learners has been a priority at our school. In addition, teachers receive training in using technology to analyze student achievement data. Our school has received ongoing training in the effective implementation of the Houghton Mifflin English Language Arts adoption.

For the previous three school years, we had ten days each year dedicated to staff and professional development.



2743 Plumas School Road
Marysville, CA 95901
Phone: (530) 743-4428
Fax: (530) 743-1408
www.plusd.org



Plumas ESD Mission Statement

Our district's mission is to provide a learning community that challenges ALL students to realize their greatest potential. Where the environment is committed to ensuring a student-focused, safe, and challenging, where students understand and assume responsibility for lifelong learning; work to achieve their personal best; and become productive citizens in a diverse, global society.



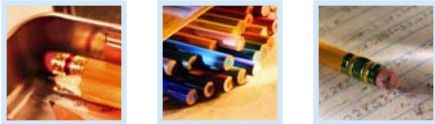
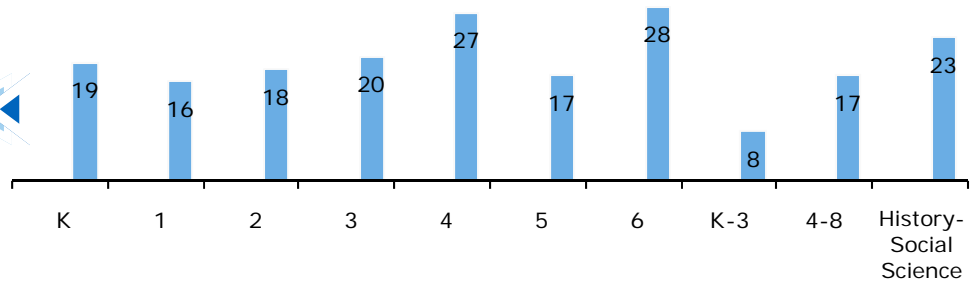
Plumas Lake Unified School District



Class Size

The adjacent chart displays the three-year data for average class size.

■ 04-05 □ 05-06 ■ 06-07



Types of Services Funded

The following is a list of Federal and State funded programs that are provided to students:

- Title I (Basic Grant)
- Title I Migrant Education
- Title II (Teacher & Principal Training & Recruiting)
- Title II Technology
- Title III (for Limited English Proficient Students)
- Title IV (Safe and Drug-Free Schools and Communities)
- Title V (Innovative Programs)
- Economic Impact Aid-Limited English Proficient (EIA/LEP)
- Gifted and Talented Education (GATE)
- Beginning Teacher Support and Assessment (BTSA)
- Class Size Reduction (CSR)
- Hourly Programs (extended day/year education)
- English Language Acquisition Program (ELAP)
- Community-Based English Tutoring (CBET)
- School Improvement Program (SIP)
- Special Education
- School Library Grant
- TUPE (Tobacco Use Prevention Education)
- AB1113 School Safety & Violence Prevention

Grade	2004-05			2005-06			2006-07		
	1-20	21-32	33+	1-20	21-32	33+	1-20	21-32	33+
K	⌘	⌘	⌘	⌘	⌘	⌘	2		
1	⌘	⌘	⌘	⌘	⌘	⌘	2		
2	⌘	⌘	⌘	⌘	⌘	⌘	2		
3	⌘	⌘	⌘	⌘	⌘	⌘	2		
4	⌘	⌘	⌘	⌘	⌘	⌘		1	
5	⌘	⌘	⌘	⌘	⌘	⌘	2		
6	⌘	⌘	⌘	⌘	⌘	⌘		1	
K-3	⌘	⌘	⌘	⌘	⌘	⌘	1		
3-4	⌘	⌘	⌘	⌘	⌘	⌘			
4-8	⌘	⌘	⌘	⌘	⌘	⌘	1		

⌘ Riverside Meadows ES first opened in the 2006-07 year. Therefore, there is no data prior to 2006-07 for the school.

Subject	2004-05			2005-06			2006-07		
	1-22	23-32	33+	1-22	23-32	33+	1-22	23-32	33+
English-Language Arts	⌘	⌘	⌘	⌘	⌘	⌘			
Mathematics	⌘	⌘	⌘	⌘	⌘	⌘			
Science	⌘	⌘	⌘	⌘	⌘	⌘			
History-Social Science	⌘	⌘	⌘	⌘	⌘	⌘		1	

⌘ Riverside Meadows ES first opened in the 2006-07 year. Therefore, there is no data prior to 2006-07 for the school.

School Safety

Your child's safety is important to us. We believe that nothing should get in the way of the academic achievement of our students, which is why it is important that our students feel safe. Our District is committed to providing a safe, secure environment for learning. Our students and staff participate in regularly planned fire drills. An emergency handbook—outlining a plan of action for emergencies such as earthquakes, fires, floods, and chemical spills—is kept in the office of our school. The District maintenance staff conducts random periodic school safety inspections. The Yuba County Sheriff's Department works closely with our school sites to provide a safe, secure environment for all students.

The School Safety Plan is reviewed at the beginning of each school year; it was most recently reviewed, updated, and discussed with school faculty in September 2007. It includes drills for fire, earthquakes, and other disasters.



Textbooks and Instructional Materials

Quality and Availability of Textbooks	
Grades	Textbook
K	<i>My World</i> , Houghton Mifflin
1	<i>Saxon Math</i> , Houghton Mifflin
	<i>School And Family</i> , Houghton Mifflin
	<i>Reading Ca</i> , Houghton Mifflin
2	<i>Saxon Math</i> , Mcgraw Hill
	<i>CA Vistas People And Places</i> , McGraw-Hill
	<i>Reading CA</i> , Houghton Mifflin
3	<i>Saxon Math</i> , Mcgraw Hill
	<i>Science: Discovery Works</i> , Mcgraw Hill
	<i>CA Vistas California Communities</i>
	<i>Reading CA</i> , Houghton Mifflin
4	<i>Saxon Math</i> , Mcgraw Hill
	<i>Saxon Science</i> , Mcgraw Hill
	<i>CA Vistas Our Golden State</i>
	<i>Reading CA Traditions</i> , Houghton Mifflin
5	<i>Saxon Science</i> , Houghton Mifflin
	<i>United States History Early Years</i>
	<i>Reading CA Expeditions</i> , Houghton Mifflin
6	<i>Saxon Math</i> , Mcdougal Littell
	<i>Science Voyages</i> , Mcdougal Littell
	<i>History: Ancient Civilizations</i> , Mcdougal Littell
	<i>Language Of Literature</i>
7	<i>Pre-Algebra</i> , Prentice Hall
	<i>Science Voyages</i> , Mcdougal Littell
	<i>History: Medieval And Early Modern Times</i> , Mcdougal Littell
	<i>Language Of Literature</i>
8	<i>Algebra</i> , Prentice Hall
	<i>Science Voyages</i> , Mcdougal Littell
	<i>History: Creating America</i> , Mcdougal Littell
	<i>Language Of Literature</i>



Textbooks and Instructional Materials

Every student at Riverside Meadows is issued a textbook for each of their core curricular classes. These books have been adopted by the governing board and are on the approved textbook list from the State of California. The District is currently reviewing materials for the upcoming math textbook adoption; committees of teachers and administrators have been involved in the selection process. Parents and community members were invited to attend any of the publishers' presentations at the school sites.

Classes offered in the visual and performing arts include art and music.

Availability of Textbooks

The following lists the percentage of pupils who lack their own assigned textbook and instructional materials:

- Reading/Language Arts 0%
- Mathematics 0%
- Science 0%
- History-Social Science 0%
- Visual & Performing Arts 0%
- Health 0%
- Foreign Language 0%

Quality and Availability of Textbooks	
Subject	Year of Textbook Adoption
English-Language Arts	2001
Mathematics	2000
Science	1999
History-Social Science	2006-07

Note: This data was most recently collected and verified in September 2007.



Plumas Lake Unified School District



School Facilities

In the 2006-07 school year we opened our second new school in the Plumas Lake area: Riverside Meadows. We are proud of our Plumas Lake ESD campuses and strive to keep our schools in good repair so they are clean, safe, functional, and provide an orderly environment for teaching and learning.

Riverside Meadows is a new school in excellent condition. Three custodians clean the school on a daily basis. Staggering shifts allows us to have one custodian during the school day, and two custodians end their shifts in the evening (after school hours). There are 22 regular classrooms, a science lab, a library, a computer lab, an art lab, a multipurpose room, and one Special Education room. The design capacity of the school is 704 students. There were two portables used during the 2006-07 school year.

The District participates in the State School Deferred Maintenance Program, which provides state matching funds on a dollar-for-dollar basis, to assist school districts with expenditures for major repair or replacement of existing school building components. Typically, this includes roofing, plumbing, heating, air conditioning, electrical systems, interior or exterior painting, and floor systems. For the 2006-07 school year, the District budgeted \$45,720.00 for the deferred maintenance program. This represents 0.6 percent of the District's general fund budget.

Enrollment and Demographics

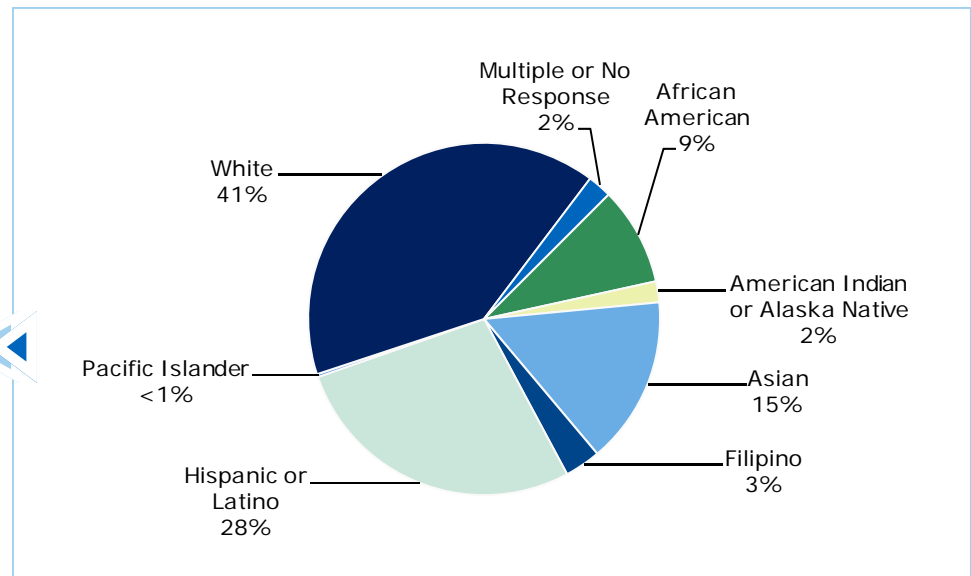
The total enrollment was 364 students for the 2006-07 school year.

School Facility Good Repair Status

Below are the results of the school's most recently completed inspection, using the Facilities Inspection Tool (FIT) or equivalent school form. This inspection determines the school facility's good repair status.

School Facility Conditions and Improvements				
Item Inspected	Repair Status			
	Good	Fair	Poor	
Gas Leaks	✓			
Mechanical Systems	✓			
Windows/Doors/Gates (interior and exterior)	✓			
Interior Surfaces (walls, floors, and ceilings)	✓			
Hazardous Materials (interior and exterior)	✓			
Structural Damage	✓			
Fire Safety	✓			
Electrical (interior and exterior)	✓			
Pest/Vermin Infestation	✓			
Drinking Fountains (inside and outside)	✓			
Restrooms	✓			
Sewer	✓			
Playground/School Grounds	✓			
Roofs	✓			
Overall Cleanliness	✓			
Overall Summary of Facility Condition				
Item Inspected	Exemplary	Good	Fair	Poor
Overall Summary	✓			

Note: The most recent school site inspection occurred on September 6, 2007, and the inspection form was most recently completed on September 6, 2007.





California Standards Tests Results

The multiple-choice California Standards Tests (CST) are part of the Standardized Testing and Reporting (STAR) and are administered only to students in California public schools. These tests determine students' achievement of the California Academic Content Standards and provide feedback on their success given what they are expected to know in each grade level and subject.

Percentage of Students Scoring At Proficient or Advanced Levels									
	Riverside Meadows ES			Plumas Lake ESD			California		
	04-05	05-06	06-07	04-05	05-06	06-07	04-05	05-06	06-07
English-Language Arts	⌘	⌘	43%	35%	43%	42%	40%	42%	43%
Mathematics	⌘	⌘	42%	39%	51%	46%	38%	40%	40%
Science	⌘	⌘	26%	26%	35%	30%	27%	35%	38%
History-Social Science	⌘	⌘	22%	21%	32%	25%	32%	33%	33%

⌘ Riverside Meadows ES first opened in the 2006-07 year. Therefore, there is no data prior to 2006-07 for the school.

CST Subgroup Results: English-Language Arts, Mathematics, Science, and History-Social Science

Percentage of Students Scoring At Proficient or Advanced Levels				
Subgroup	Spring 2007 Results			
	English-Language Arts	Mathematics	Science	History-Social Science
Male	37%	40%	30%	33%
Female	49%	45%	22%	14%
Economically Disadvantaged	33%	36%	18%	17%
English Learners	26%	28%	21%	❖
Students with Disabilities	0%	4%	❖	❖
Migrant Education Services	❖	❖	❖	❖
African American	29%	26%	❖	❖
American Indian or Alaska Native	❖	❖	❖	❖
Asian	34%	38%	8%	❖
Filipino	63%	63%	❖	❖
Hispanic or Latino	35%	42%	26%	17%
Pacific Islander	❖	❖	❖	❖
White	50%	44%	31%	19%

❖ Scores are not shown when the number of students tested is 10 or less, either because the number of students tested in this category is too small for statistical accuracy or to protect student privacy.

California Standards Tests

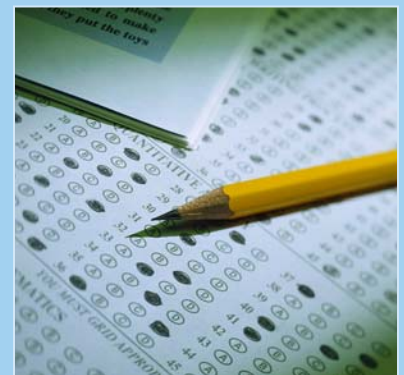
For the 2007 STAR exam, students in grades 2-11 took an English-language arts and mathematics test. Students in grades 4 and 7 also participated in an essay writing test. History-social science tests were given to students in grades 8 and 11, and students in grades 5, 8, and 10 took a science test. Students in grades 9-11 who completed a Standards-based science course and/or history-social science course were given additional exams.

Because tests are meant to measure how well students achieve standards rather than how well they do compared to other students, the results are reported as performance levels. The five performance levels are:

- **Advanced** (*exceeds State Standards*)
- **Proficient** (*meets Standards*)
- **Basic**
- **Below basic**
- **Far below basic**

Students scoring at the Proficient or Advanced level meet State Standards in that content area.

The adjacent tables show the percentage of students that scored at proficient or advanced levels in English-language arts, mathematics, science, and history-social science. For a complete report on all subgroups and their scores by grade level, please visit <http://star.cde.ca.gov/>.





Norm Referenced Tests

Norm referenced tests (NRT) are nationally administered multiple-choice achievement tests that provide statistical feedback on a national level. The purpose of these tests is to determine how well California students are achieving academically compared to students nationally in reading, language, spelling, and mathematics in grades 3 and 7 only. The current NRT adopted by the State Board of Education is the California Achievement Test, Sixth Edition, or CAT/6. For a complete report on all subgroups and their scores by grade level, please visit <http://star.cde.ca.gov/>.

The adjacent tables show the percentage of students that scored at or above the 50th percentile (national average) in reading and math.



Norm Referenced Test Results

	Percentage of Students Scoring At or Above the 50th Percentile					
	Reading			Mathematics		
	04-05	05-06	06-07	04-05	05-06	06-07
Riverside Meadows ES	⌘	⌘	51%	⌘	⌘	55%
Plumas Lake ESD	45%	45%	48%	52%	56%	53%
California	41%	42%	42%	52%	53%	53%

⌘ Riverside Meadows ES first opened in the 2006-07 year. Therefore, there is no data prior to 2006-07 for the school.

NRT Subgroup Results: Reading and Math

Subgroup	Percentage of Students Scoring At or Above the 50th Percentile	
	Spring 2007 Results	
	Reading	Mathematics
Male	44%	58%
Female	59%	52%
Economically Disadvantaged	37%	47%
English Learners	26%	42%
Students with Disabilities	9%	9%
Migrant Education Services	❖	❖
African American	20%	27%
American Indian or Alaska Native	❖	❖
Asian	33%	33%
Filipino	❖	❖
Hispanic or Latino	44%	52%
Pacific Islander	❖	❖
White	64%	66%

❖ Scores are not shown when the number of students tested is 10 or less, either because the number of students tested in this category is too small for statistical accuracy or to protect student privacy.

California Physical Fitness Test

Each spring, all students in grades 5, 7, and 9 are required to participate in the California Physical Fitness Test (PFT). The test measures six key fitness areas:

1. Aerobic Capacity
2. Body Composition
3. Abdominal Strength
4. Trunk Extension Strength
5. Upper Body Strength
6. Flexibility

To meet fitness standards, students must score in the Healthy Fitness Zone (HFZ) on all six fitness tests. For 2006-07, 33.3% of students in the fifth grade and 46.0% of students in the seventh grade scored in the HFZ. For more information on the California PFT, please visit www.cde.ca.gov/ta/tq/pf/.



Adequate Yearly Progress

Adequate Yearly Progress Criteria				
	Riverside Meadows ES		Plumas Lake ESD	
Met Overall AYP	Yes		Yes	
AYP Criteria	English-Language Arts	Mathematics	English-Language Arts	Mathematics
Participation Rate	Yes	Yes	Yes	Yes
Percent Proficient	Yes	Yes	Yes	Yes
API	Yes		Yes	
Graduation Rate	✧		Yes	

✧ Not applicable. The graduation rate for AYP criteria applies to high schools.

Adequate Yearly Progress

NCLB requires that all schools and districts meet Adequate Yearly Progress (AYP) requirements. To meet these standards, California public schools and districts must meet or exceed criteria in four target areas:

1. Participation rate on statewide assessments
2. Percent of students scoring proficient on statewide assessments
3. API scores
4. Graduation rate for high schools

For a detailed report on Adequate Yearly Progress, please visit www.cde.ca.gov/ta/ac/ay/.

Academic Performance Index

API Ranks — Three Year Comparison			
	2003-04	2004-05	2005-06
Statewide API Rank	⌘	⌘	⌘
Similar Schools API Rank	⌘	⌘	⌘

API Growth by Student Group — Three Year Comparison				
Group	Actual API Change			2006-07 API Score
	2004-05	2005-06	2006-07	
All Students at the School	⌘	⌘	◇	721
African American	⌘	⌘	■	■
American Indian or Alaska Native	⌘	⌘	■	■
Asian	⌘	⌘	■	■
Filipino	⌘	⌘	■	■
Hispanic or Latino	⌘	⌘	■	705
Pacific Islander	⌘	⌘	■	■
White	⌘	⌘	■	743
Socioeconomically Disadvantaged	⌘	⌘	■	680
English Learners	⌘	⌘	■	■
Students with Disabilities	⌘	⌘	■	■

⌘ Riverside Meadows ES first opened in the 2006-07 year. Therefore, there is no data prior to 2006-07 for the school.

◇ Information not available.

■ Data are reported only for numerically significant subgroups.

Academic Performance Index

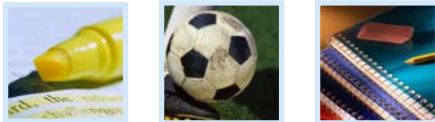
The Academic Performance Index (API) is an annual measure of the academic performance and progress of schools in California. The API is a score on a scale of 200 to 1,000, with 800 set as the statewide target. Schools are ranked in ten categories of equal size from 1 (lowest) to 10 (highest). A similar schools API rank reflects how a school compares to 100 statistically matched "similar schools." The adjacent tables show the school's three-year data for API rank and API growth. For more detailed information, please visit www.cde.ca.gov/ta/ac/ap/.

Testing Note: Assessment data are reported only for numerically significant subgroups. Data may not appear if ethnic/racial, socio-economically disadvantaged, or other subgroups (1) contain less than 100 students with valid test scores OR (2) comprise less than 15% of the school population tested and contain less than 50 students with valid scores.



Teacher Qualifications

The adjacent table shows information about teacher credentials and teacher qualifications. More information can be found by visiting <http://data1.cde.ca.gov/dataquest/>.



No Child Left Behind Compliant Teachers

No Child Left Behind (NCLB) requires that all teachers of core academic subject areas be "highly qualified." In general, for a teacher to be considered highly qualified, they must have a bachelor's degree, an appropriate California teaching credential, and have demonstrated competence for each core subject he or she teaches. For more information on teacher qualifications related to NCLB, please visit www.cde.ca.gov/nclb/sr/tq.

School Support Staff

The following is a list of the support staff at the school and their full-time equivalent (FTE):

- Library Media Teacher (Librarian) 0.0
- Library Media Services Staff (paraprofessional) 1.0
- Psychologist 0.2
- Social Worker 0.0
- Nurse 0.0
- Speech/Language/Hearing Specialist 0.0
- Resource Specialist (non-teaching) 1.0
- Other 0.0

Teacher Qualifications

Teacher Credential Information				
	Plumas Lake ESD	Riverside Meadows ES		
Teachers	2006-07	04-05	05-06	06-07
With Full Credential	52	⌘	⌘	19
Without Full Credential	7	⌘	⌘	5
Teaching Outside Subject Area of Competence		⌘	⌘	0
		05-06	06-07	07-08*
Teacher Misassignments of English Learners— Teachers of English Learners (EL) without EL certification		⌘	0	0
Total Teacher Misassignments		⌘	0	0
Vacant Teacher Positions—teacher in a position that was vacant at the beginning of the year for a full year or an entire semester		⌘	0	0

⌘ Riverside Meadows ES first opened in the 2006-07 year. Therefore, there is no data prior to 2006-07 for the school.

* Most current data.

No Child Left Behind Compliant Teachers

Core Academic Courses Taught by NCLB Compliant Teachers		
	% of Classes Taught by NCLB Compliant Teachers	% of Classes Taught by Non-NCLB Compliant Teachers
Riverside Meadows ES	100%	0.0%
All Schools in District	100%	0.0%
High-Poverty Schools in District	⬠	⬠
Low-Poverty Schools in District	⬠	⬠

⬠ Information not available.

Academic Counselors

Number of Academic Counselors (FTE)	Ratio of Students Per Academic Counselor
0.0	0.0

Suspensions and Expulsions

The table below shows the rate of suspensions and expulsions (the total number of incidents divided by the school's total enrollment) for the most recent three-year period.

Suspension and Expulsion Rates						
	Riverside Meadows ES			Plumas Lake ESD		
	2004-05	2005-06	2006-07	2004-05	2005-06	2006-07
Suspension Rate	⌘	⌘	0.096	0.011	0.036	0.062
Expulsion Rate	⌘	⌘	0.000	0.000	0.000	0.000

⌘ Riverside Meadows ES first opened in the 2006-07 year. Therefore, there is no data prior to 2006-07 for the school.



Federal Intervention Program

Schools that receive Title I funding can enter Program Improvement (PI) if they don't reach AYP over two consecutive years in the same content area (English-language arts or mathematics) or on the same indicator (API or graduation rate). With each additional year that they don't meet AYP, they advance to the next level of intervention. For more information, please visit www.cde.ca.gov/ta/ac/ay.

Federal Intervention Program		
	Riverside Meadows ES	Plumas Lake ESD
Program Improvement Status	Not In PI	Not In PI
First Year of Program Improvement	✧	✧
Year in Program Improvement	✧	✧
Number of Schools Identified for Program Improvement		0
Percent of Schools Identified for Program Improvement		0.0%

✧ Not applicable.

Financial Information

The data displayed is from the 2005-06 school year because the most current fiscal information available provided by the state is always two years behind the current school year, and one year behind most other data included in this report.

District Salary Information — Does not include benefits		
Range	Plumas Lake ESD	Similar Sized District
Beginning Teacher Salary	✧	\$36,760
Mid-Range Teacher Salary	✧	\$52,816
Highest Teacher Salary	✧	\$64,666
Average Principal Salary	✧	\$83,075
Superintendent Salary	✧	\$98,053
% of Budget for Teacher Salaries	39.5%	38.5%
% of Budget for Administrative Salaries	7.5%	6.4%

Financial Data				
	Total Expenditures Per Pupil	Expenditures Per Pupil From Restricted Sources	Expenditures Per Pupil From Unrestricted Sources	Average Teacher Salary
Riverside Meadows ES	⌘	⌘	⌘	⌘
Plumas Lake ESD			⌘	⌘
California			⌘	⌘
% Difference Between School and District			⌘	⌘
% Difference Between School and California			⌘	⌘

✧ Information not available.

⌘ Riverside Meadows ES first opened in the 2006-07 year. Therefore, there is no data prior to 2006-07 for the school.

Public Internet Access

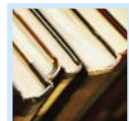
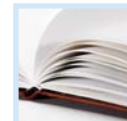
Students have access to the Internet and library resources during the school day and during extended classes.

Public Internet Access:

Computers with Internet access are available for student use at each school library; for information on usage of the school library, please contact the school.

For information on usage of Yuba County public libraries, including public use of computers with Internet access, please call (530) 749-7380, e-mail library@co.yuba.ca.us, or visit www.co.yuba.ca.us/departments/library.

For information on usage Sutter County public libraries, including public use of computers with Internet access, please call (530) 822-7137 or visit www.co.sutter.ca.us/doc/government/depts/library/library.



“We encourage an environment where students are physically, socially, emotionally, intellectually, and psychologically supported, and one free of drugs, that are safe and conducive to learning.”



Riverside Meadows Elementary School

Grades K-8

1751 Cimarron Drive Plumas Lake, CA 95961

Phone: (530) 743-1271 Fax: (530) 743-8970

Web site: www.plusd.org/schools/riversidemeadowsis

PUBLISHED BY

SIA School
Innovations
& Advocacy

www.sia-us.com 800.487.9234

SARC—The information contained herein is provided by the California Department of Education: Enrollment and Demographics, Class Size, Counselors and Support Staff, CST, NRT, API, PI, AYP, California PFT, Teacher Qualifications, and some Financial Information. For additional information on facts about California schools and districts, please visit DataQuest at <http://data1.cde.ca.gov/dataquest>.

DataQuest is an online resource that provides reports for accountability, test data, enrollment, graduates, dropouts, course enrollments, staffing and data regarding English Learners.

All other information is provided by the school and the district office.

All data accurate as of March 13, 2008.
